

<b>Site Name</b>	<b>Moorlakes Wood</b>				
<b>Site of Importance for Nature Conservation</b>					
<b>Date Verified</b>	<b>31/03/2013</b>	<b>Area (ha)</b>	<b>31</b>	<b>Site Ref</b>	<b>235</b>

**Species Features**

<b>Scientific name</b>	<b>Common name</b>	<b>W&amp;CA/ EPS</b>	<b>S42</b>	<b>RDB</b>	<b>Priority SINC</b>	<b>Secondary SINC</b>
<i>Alauda arvensis</i>	Sky Lark		Bird	Red		B(B,W&P)
<i>Carduelis cannabina</i>	Common Linnet		Bird	Red		B(B,W&P)
<i>Charadrius hiaticula</i>	Ringed Plover		Bird	Amber	A(B)	B(W&P)
<i>Coenonympha pamphilus</i>	Small Heath		invert			MCS
<i>Emberiza schoeniclus</i>	Reed Bunting		Bird	Red		B(B,W&P)
<i>Falco tinnunculus</i>	Common Kestrel		Bird	Amber	A(B)	B(W&P)
<i>Lycia hirtaria</i>	Brindled Beauty		invert			
<i>Passer domesticus</i>	House Sparrow		Bird	Red		B(B,W&P)
<i>Picus viridis</i>	Green Woodpecker			Amber		B(B,W&P)
<i>Poecile palustris</i>	Marsh Tit		Bird	Red	A(B)	B(W&P)
<i>Saxicola torquatus</i>	Stonechat			Amber		B(B,W&P)
<i>Scolopax rusticola</i>	Eurasian Woodcock			Amber		B(B,W&P)
<i>Spilosoma luteum</i>	Buff Ermine		invert			
<i>Sturnus vulgaris</i>	Common Starling		Bird	Red		B(B&R)
<i>Tadorna tadorna</i>	Common Shelduck			Amber	A(B)	B(W&P)
<i>Turdus philomelos</i>	Song Thrush		Bird	Red		B(B,W&P)
<i>Tyria jacobaeae</i>	Cinnabar		invert			

**Habitat Features**

<b>Name</b>	<b>SINC</b>	<b>S42</b>	<b>BAP</b>	<b>Area (ha)</b>
Other habitats				0.43
Wld containing an Assemblage of AWI species	H1.3.2	X	X	22.66
Structurally-diverse and species-rich Scrub	H1.4.1			6.82
Species-rich Purple Moor-grass and Rush Pasture	H9.3.2	X	X	0.54
Watercourse with exposure/erosion features	H12.1.2	X	X	0.24
			<b>Total</b>	<b>30.68</b>

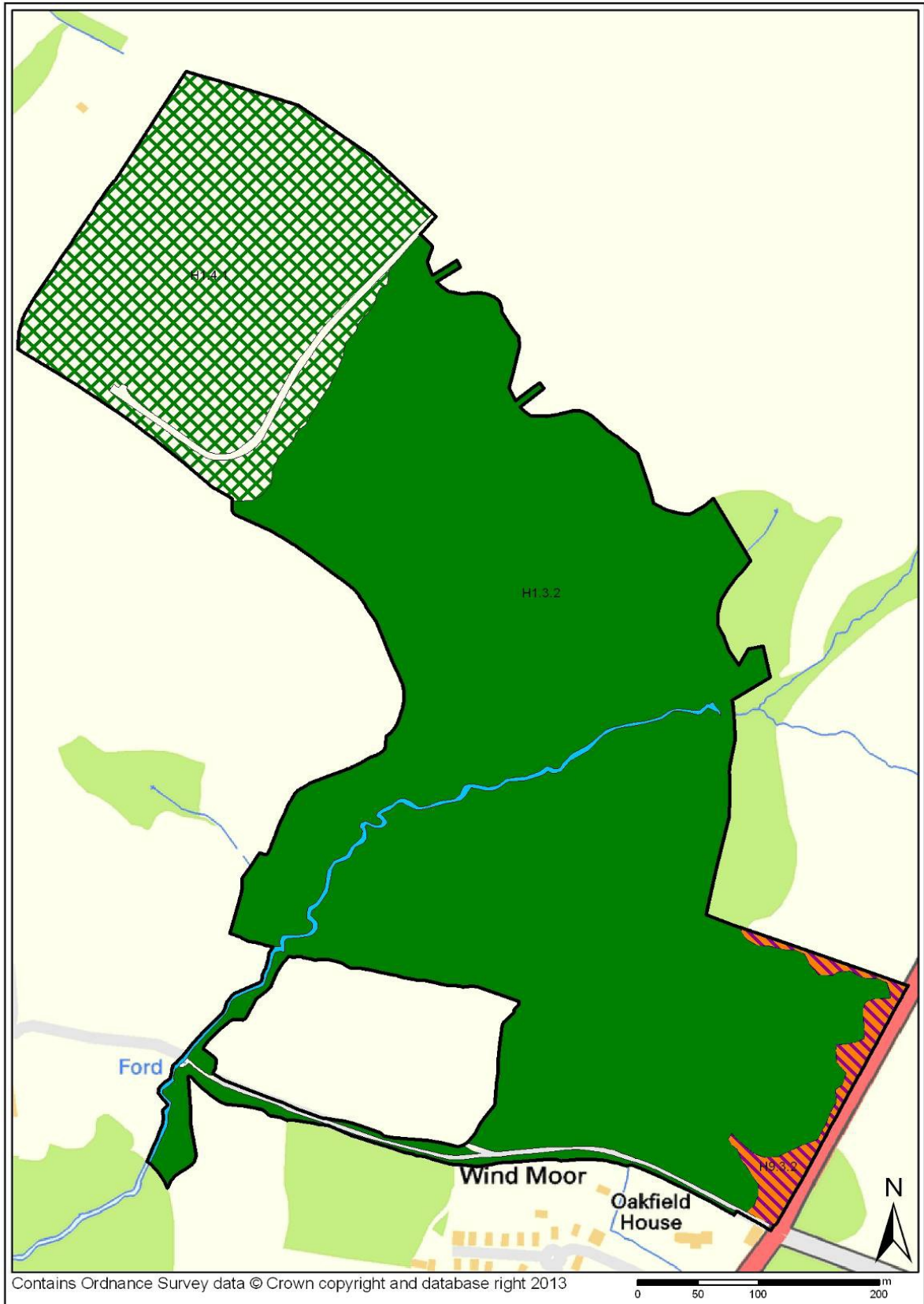
**Site Survey Information**

<b>Name</b>	<b>spp list</b>	<b>SINC</b>	<b>P1</b>	<b>NVC</b>
Wld containing an Assemblage of AWI species	194	H1.3.2	A1.1.1	W9a
Structurally-diverse and species-rich Scrub	196	H1.4.1	A2.1	
Species-rich Purple Moor-grass and Rush Pasture	485	H9.3.2	B5	M25b
Watercourse with exposure/erosion features	597	H12.1.2	G2	

**Site Information**

<b>Ward/s</b>	<b>Grid ref</b>
Gower	SS565:902
Pennard	

Habitat Features Map



Contains Ordnance Survey data © Crown copyright and database right 2013