

Site Name	Llanmadoc Hill					
Site of Importance for Nature Conservation						
Date Verified	31/03/2013	Area (ha)	209	Site Ref	357	

Species Features

Scientific name	Common name	W&CA/ EPS	S42	RDB	Priority SINC	Secondary SINC
<i>Agrostis curtisii</i>	Bristle Bent			LC	PVP	
<i>Alauda arvensis</i>	Sky Lark		Bird	Red		B(B,W&P)
<i>Carduelis cannabina</i>	Common Linnet		Bird	Red		B(B,W&P)
<i>Charadrius morinellus</i>	Dotterel	Sch 1		Amber	A(W&P)	
<i>Coenonympha pamphilus</i>	Small Heath		invert			MCS
<i>Emberiza citrinella</i>	Yellowhammer		Bird	Red	A(B)	B(W&P)
<i>Falco tinnunculus</i>	Common Kestrel		Bird	Amber	A(B)	B(W&P)
<i>Larus argentatus</i>	Herring Gull		Bird	Amber		B(B)
<i>Lasiommata megera</i>	Wall		invert			MCS
<i>Lepus europaeus</i>	Brown Hare		Mamal	LC		CM
<i>Milvus milvus</i>	Red Kite	Sch 1		Amber	A(B)	
<i>Passer domesticus</i>	House Sparrow		Bird	Red		B(B,W&P)
<i>Pluvialis apricaria</i>	European Golden Plover		Bird		A(B)	B(W&P)
<i>Pyrhacorax pyrrhacorax</i>	Chough	Sch 1	Bird	Amber	A(B,W&P)	
<i>Riparia riparia</i>	Sand Martin			Amber		B(B)
<i>Saxicola torquatus</i>	Stonechat			Amber		B(B,W&P)
<i>Sturnus vulgaris</i>	Common Starling		Bird	Red		B(B&R)
<i>Sylvia undata</i>	Dartford Warbler	Sch 1		Amber	A(B,W&P)	
<i>Tettigonia viridissima</i>	Great Green Bushcricket				OrthA	
<i>Turdus philomelos</i>	Song Thrush		Bird	Red		B(B,W&P)
<i>Turdus torquatus</i>	Ring Ouzel		Bird	Red	A(B)	
<i>Vanellus vanellus</i>	Northern Lapwing		Bird	Amber	A(B)	B(W&P)

Habitat Features

Name	SINC	S42	BAP	Area (ha)
Other habitats				2.44
Structurally-diverse and species-rich Scrub	H1.4.1			0.21
Gorse stands	H1.4.2			14.63
Relatively species-rich neutral grassland	H5.1.2			0.28
Unimproved Lowland Dry Acid Grassland	H7.1.1	X	X	35.75
Unmodified Lowland wet heath	H8.1.1	X	X	5.11
Unmodified Lowland dry heath	H8.1.2	X	X	35.83
Lowland Fen	H9.2	X	X	0.11
Species-rich Bracken Communities	H16.2			114.58
			Total	208.95

Site Survey Information

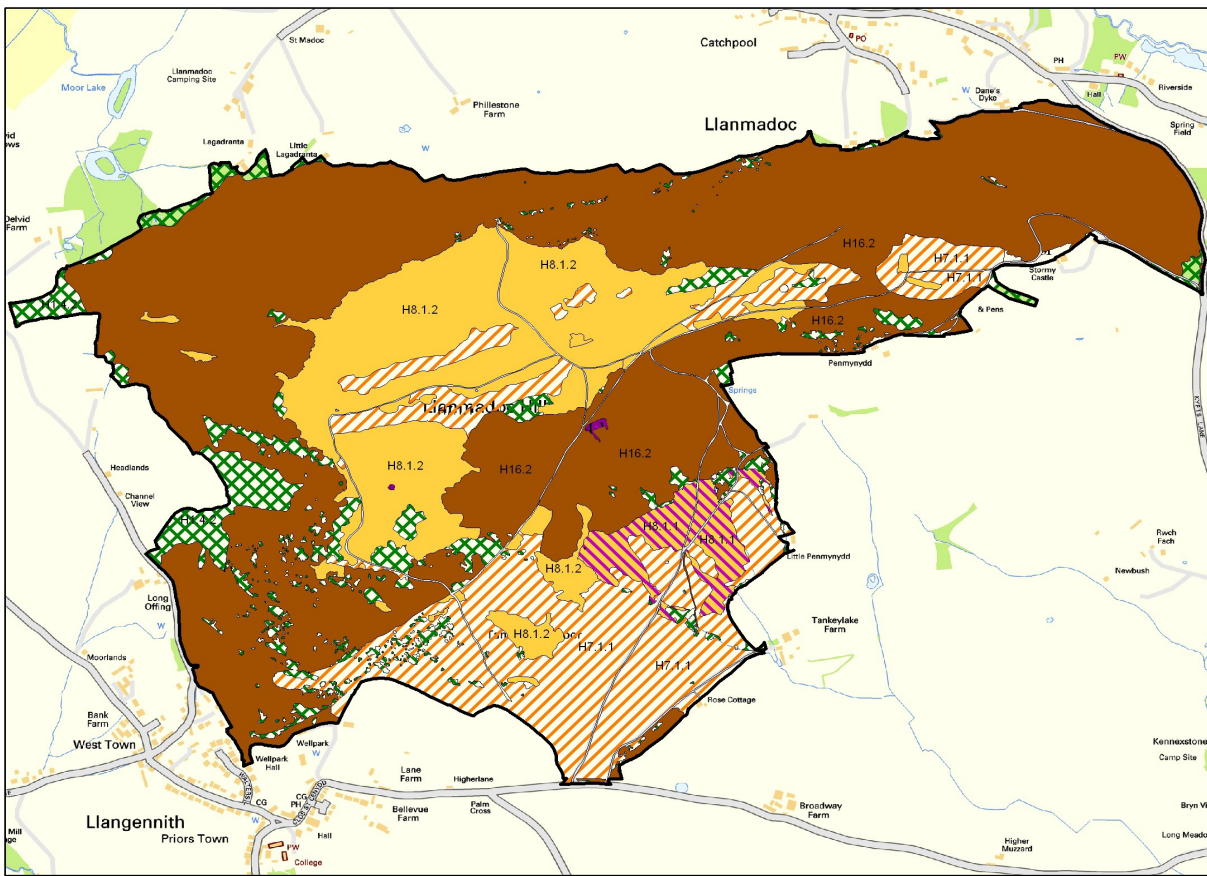
Name	spp list	SINC	P1	NVC
Gorse stands	32	H1.4.2	A2.1	W23a
Lowland Fen	137	H9.2	F1	M35
Unimproved Lowland Dry Acid Grassland	215	H7.1.1	B1.1	U4
Species-rich Bracken Communities	216	H16.2	C1.1	U20a
Species-rich Bracken Communities	217	H16.2	C1.1	U20a
Structurally-diverse and species-rich Scrub	560	H1.4.1	A2.1	
Relatively species-rich neutral grassland	570	H5.1.2		
Unmodified Lowland wet heath	580	H8.1.1		

Unmodified Lowland dry heath	581	H8.1.2		
------------------------------	-----	--------	--	--

Site Information

Ward/s	Grid ref
Gower	SS436:923

Habitat Features Map



Contains Ordnance Survey data © Crown copyright and database right 2012