

<b>Site Name</b>	<b>Banc Darren Fawr</b>					
<b>Site of Importance for Nature Conservation</b>						
<b>Date Verified</b>	<b>31/03/2013</b>	<b>Area (ha)</b>	<b>2085</b>	<b>Site Ref</b>	<b>1</b>	

**Species Features**

<b>Scientific name</b>	<b>Common name</b>	<b>W&amp;CA/ EPS</b>	<b>S42</b>	<b>RDB</b>	<b>Priority SINC</b>	<b>Secondary SINC</b>
<i>Accipiter gentilis</i>	Northern Goshawk	Sch 1				B(B)
<i>Acronicta rumicis</i>	Knot Grass		invert			
<i>Agrochola helvola</i>	Flounced Chestnut		invert			
<i>Alauda arvensis</i>	Sky Lark		Bird	Red		B(B,W&P)
<i>Alcedo atthis</i>	Common Kingfisher	Sch 1		Amber		B(B,W&P)
<i>Allophyes oxyacanthae</i>	Green Brindled Chestnut		invert			
<i>Apamea remissa</i>	Dusky Brocade		invert			
<i>Arctia caja</i>	Garden Tiger		invert			
<i>Boloria selene</i>	Small Pearl-Bordered Fritillary		invert		CS	
<i>Brachylomia viminalis</i>	Minor Shoulder-Knot		invert			
<i>Bufo bufo</i>	Common Toad		Hepto	LC		
<i>Carduelis cabaret</i>	Lesser Redpoll		Bird	Amber		B(W&P)
<i>Carduelis cannabina</i>	Common Linnet		Bird	Red		B(B,W&P)
<i>Circus cyaneus</i>	Hen Harrier	Sch 1	Bird	Red	A(B,W&P)	
<i>Coenonympha pamphilus</i>	Small Heath		invert			MCS
<i>Columba oenas</i>	Stock Pigeon			Amber		B(B,W&P)
<i>Cuculus canorus</i>	Common Cuckoo		Bird	Amber	A(B)	
<i>Diarsia rubi</i>	Small Square-Spot		invert			
<i>Ecliptopera silaceata</i>	Small Phoenix		invert			
<i>Eleocharis multicaulis</i>	Many-Stalked Spike-Rush			LC		CVP
<i>Emberiza citrinella</i>	Yellowhammer		Bird	Red	A(B)	B(W&P)
<i>Emberiza schoeniclus</i>	Reed Bunting		Bird	Red		B(B,W&P)
<i>Ennomos erosaria</i>	September Thorn		invert			
<i>Eugnorisma glareosa</i>	Autumnal Rustic		invert			
<i>Falco columbarius</i>	Merlin	Sch 1		Amber	A(B)	B(W&P)
<i>Falco peregrinus</i>	Peregrine Falcon			Amber	A(B)	B(W&P)
<i>Falco tinnunculus</i>	Common Kestrel		Bird	Amber	A(B)	B(W&P)
<i>Hoplodrina blanda</i>	The Rustic		invert			
<i>Hydraecia micacea</i>	Rosy Rustic		invert			
<i>Larus argentatus</i>	Herring Gull		Bird	Amber		B(B)
<i>Larus fuscus</i>	Lesser Black-Backed Gull					B(B)
<i>Lasiommata megera</i>	Wall		invert			MCS
<i>Locustella naevia</i>	Common Grasshopper Warbler		Bird	Red		B(B)
<i>Lycia hirtaria</i>	Brindled Beauty		invert			
<i>Malacosoma neustria</i>	Lackey		invert			
<i>Melanchra persicariae</i>	Dot Moth		invert			
<i>Melanchra pisi</i>	Broom Moth		invert			
<i>Mesoligia literosa</i>	Rosy Minor		invert			

Milvus milvus	Red Kite	Sch 1		Amber	A(B)	
Muscicapa striata	Spotted Flycatcher		Bird	Red		B(B)
Mythimna comma	Shoulder-Striped Wainscot		invert			
Orthetrum coerulescens	Keeled Skimmer					OdonB
Orthosia gracilis	Powdered Quaker		invert			
Passer domesticus	House Sparrow		Bird	Red		B(B,W&P)
Phoenicurus phoenicurus	Common Redstart			Amber		B(B)
Phylloscopus sibilatrix	Wood Warbler		Bird	Amber	A(B)	
Picus viridis	Green Woodpecker			Amber		B(B,W&P)
Pluvialis apricaria	European Golden Plover		Bird		A(B)	B(W&P)
Poecile montana	Willow Tit		Bird	Red	A(B)	B(W&P)
Poecile palustris	Marsh Tit		Bird	Red	A(B)	B(W&P)
Prunella modularis	Hedge Accentor		Bird			
Pyrrhula pyrrhula	Common Bullfinch		Bird	Red		B(B,W&P)
Rhynchospora alba	White Beak-Sedge			LC	PVP	
Riparia riparia	Sand Martin			Amber		B(B)
Saxicola torquatus	Stonechat			Amber		B(B,W&P)
Scolopax rusticola	Eurasian Woodcock			Amber		B(B,W&P)
Spilosoma lubricipeda	White Ermine		invert			
Spilosoma luteum	Buff Ermine		invert			
Stilbia anomala	Anomalous		invert			
Sturnus vulgaris	Common Starling		Bird	Red		B(B&R)
Sympetrum danae	Black Darter					OdonB
Tholera cespitis	Hedge Rustic		invert			
Timandra comae	Blood-Vein		invert			
Turdus torquatus	Ring Ouzel		Bird	Red	A(B)	
Tyto alba	Barn Owl	Sch 1		Amber		B(B,W&P)
Vanellus vanellus	Northern Lapwing		Bird	Amber	A(B)	B(W&P)
Xanthia icteritia	The Sallow		invert			
Xanthorhoe ferrugata	Dark-Barred Twin-Spot Carpet		invert			
Xestia castanea	Neglected Rustic		invert			

### Habitat Features

Name	SINC	S42	BAP	Area (ha)
Other habitats				2.83
Wld containing an Assemblage of AWI species	H1.3.2	X	X	13.69
Structurally-diverse and species-rich Scrub	H1.4.1			19.91
Gorse stands	H1.4.2			14.78
Relatively species-rich neutral grassland	H5.1.2			7.95
Unimproved Upland Acid Grassland	H7.2			83.86
Unmodified Upland wet heath	H8.2.1	X	X	2.28
Unmodified Upland dry heath	H8.2.2	X	X	15.60
Degraded Upland heath	H8.2.3	X	X	0.10
Upland Fens, Marshes and Swamps	H9.1	X	X	37.10
Lowland Fen	H9.2	X	X	0.02
Species-rich Purple Moor-grass and Rush Pasture	H9.3.2	X	X	7.06
Undegraded Blanket Bog	H10.2.1	X	X	
Degraded Blanket Bog with features	H10.2.2	X	X	
Watercourse with exposure/erosion features	H12.1.2	X	X	3.88

Species-rich Bracken Communities	H16.2			287.50
Semi-natural upland block	H16.4			1588.89
			Total	2085.44

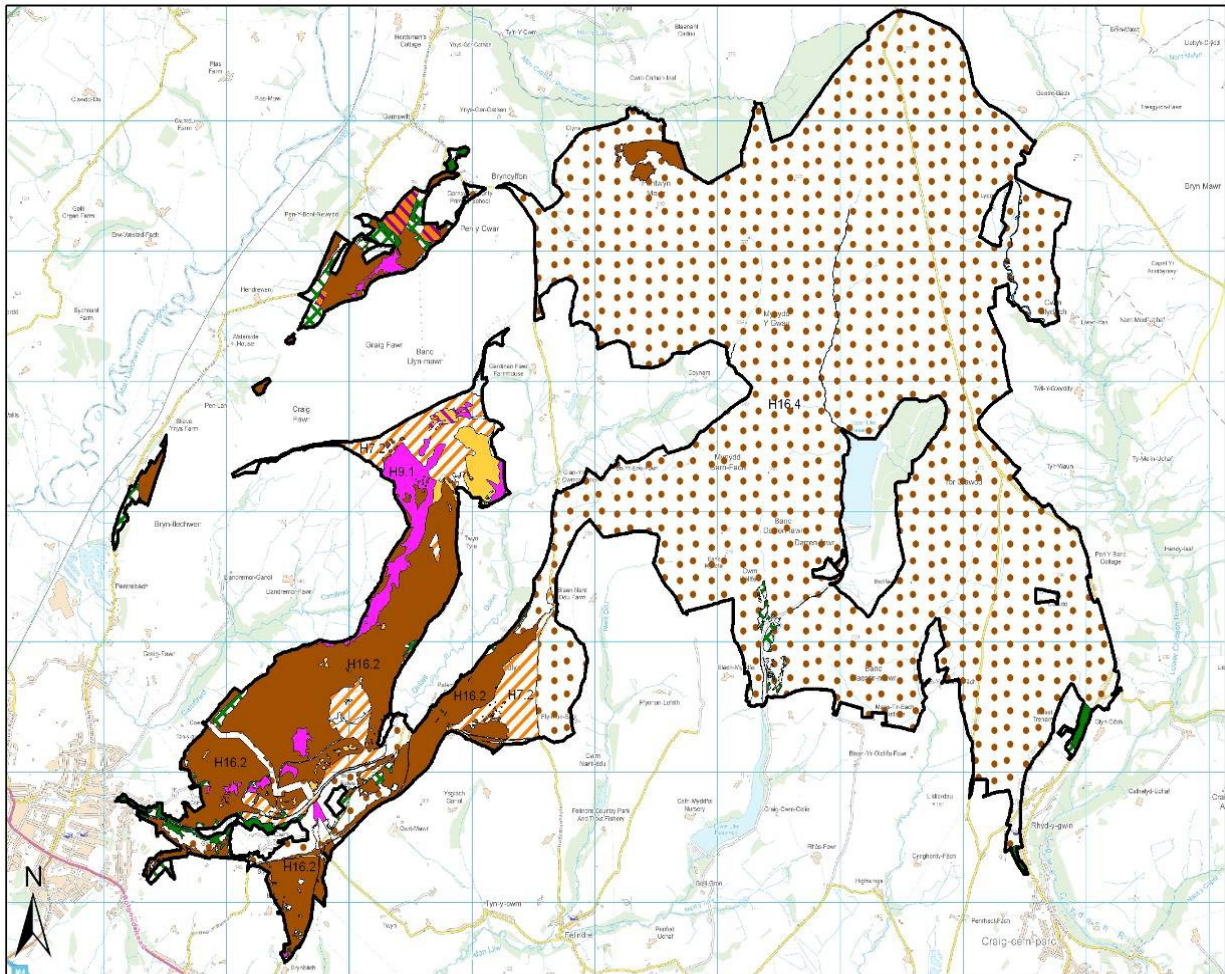
### Site Survey Information

Name	spp list	SINC	P1	NVC
Degraded Blanket Bog with features	1002	H10.2.2	E1.7	
Unimproved Upland Acid Grassland	1003	H7.2	B1.1	
Unimproved Upland Acid Grassland	1004	H7.2	B1.1	
Degraded Blanket Bog with features	1006	H10.2.2		
Degraded Blanket Bog with features	1007	H10.2.2		
Undegraded Blanket Bog	1008	H10.2.1	E1.6.1	
Undegraded Blanket Bog	1010	H10.2.1	E1.6.1	
Degraded Blanket Bog with features	1012	H10.2.2		
Degraded Blanket Bog with features	1013	H10.2.2		
Degraded Blanket Bog with features	1016	H10.2.2		
Degraded Blanket Bog with features	1017	H10.2.2		
Degraded Blanket Bog with features	1018	H10.2.2		
Wld containing an Assemblage of AWI species	182	H1.3.2	A1.1.1	W7c
Structurally-diverse and species-rich Scrub	396	H1.4.1	A2.1	
Species-rich Bracken Communities	400	H16.2	C1.1	U20a
Species-rich Purple Moor-grass and Rush Pasture	404	H9.3.2	B5	M23
Relatively species-rich neutral grassland	406	H5.1.2	B5	M23
Wld containing an Assemblage of AWI species	407	H1.3.2	A1.1.1	W10
Structurally-diverse and species-rich Scrub	408	H1.4.1	A2.1	
Semi-natural upland block	511	H16.4	G1	
Lowland Fen	512	H9.2	E2.1	M6
Structurally-diverse and species-rich Scrub	514	H1.4.1	A2.1	W23a
Unmodified Upland wet heath	520	H8.2.1	D2	M15
Relatively species-rich neutral grassland	521	H5.1.2	B2.2	MG6b
Species-rich Bracken Communities	522	H16.2	C1.1	U20b
Wld containing an Assemblage of AWI species	11401	H1.3.2	A1.1.1	W9
Gorse stands	561	H1.4.2	A2.1	
Watercourse with exposure/erosion features	597	H12.1.2	G2	
Semi-natural upland block	618	H16.4		
Unmodified Upland dry heath	584	H8.2.2		
Degraded Upland heath	585	H8.2.3		
Upland Fens, Marshes and Swamps	586	H9.1		

### Site Information

Ward/s	Grid ref
Llangyfelach	SN641:061
Mawr	
Pontardulais	

### Habitat Features Map



Contains Ordnance Survey data © Crown copyright and database right 2012 0 1.25 2.5 5 Km