

Blaenau Gwent Wildlife Site/SINC Notification Form

SITE SUMMARY

SITE NAME:

GRID REF: SO156048

SURVEYOR(S):

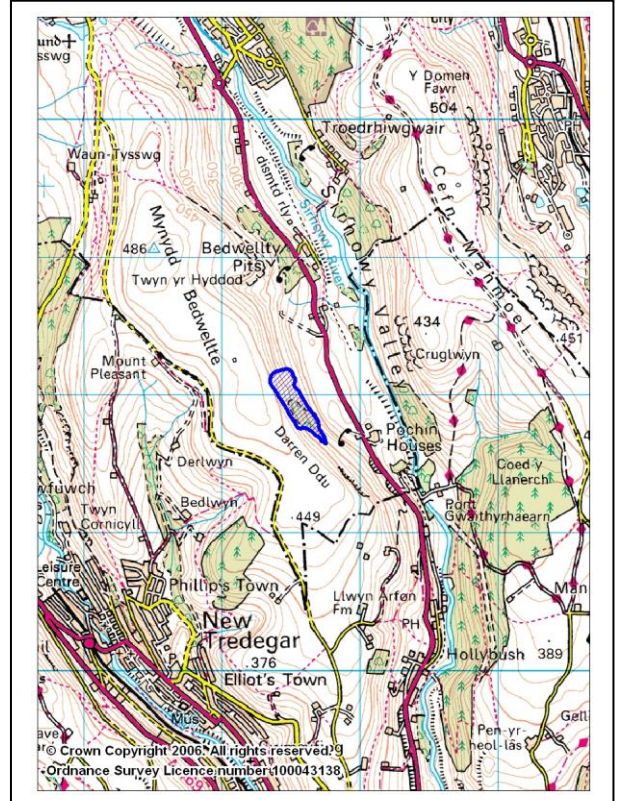
SIZE (approx.):

DATE OF SURVEY:

LOCAL AUTHORITY AREA:

WARD:

SKETCH MAP OF SITES LOCATION:



MAIN HABITAT TYPES PRESENT:

Habitat types	NVC type	Area (ha)
Woodland - sessile oak - beech	W17a W15	
Heath – bilberry with heather	H18	
Grassland – acidic (+bracken)	U4 U20	

FULL DESCRIPTION OF SITE (including topography, adjacent land use, access and boundaries etc.):

This is a classical hanging oak wood grading up from acid grassland/bracken below, partly developed on spoil or tallus. Much of the oak wood is closed canopy over acidic shrubs and bryophytes etc, but it grades out to bilberry heath above, especially in the NW corner, and to a small area of mature beech near and over the SW boundary.

The site is steep/very steep, but with a wall in good condition running centrally NW/SW for much of the length. The lower boundary is also walled with fencing. Below is enclosed pasture, in part heavily *Juncus* (Rush sp.) - infested. Below is open moorland, also bilberry (*Vaccinium myrtillus*) -rich nearby.

The woodland appears fully open to grazing sheep (+shelter) from above and tree regeneration is very limited for the most part and the ground floor is impoverished in parts.

Access was achieved from the NE across fields from the A4048. Altitude is c.350 – 420m.

Section(s) of the Wildlife Site Guidelines that this site qualifies under: H1) Woodlands (*Upland woodlands, mostly oak*), H10) Heathlands and grass heath communities, H6) Acid grassland

Qualifying Habitat types: Woodlands (*Upland woodlands, mostly oak*), Heathlands and grass heath communities, Acid grassland

Official Use Only: Site selected as a Wildlife Site/SINC? YES NO Date: